

Illinois New Teacher Collaborative

Using the CDE: Results of INTC research with funded programs

INTC Conference
March 1, 2011

intc@illinois.edu <http://intc.education.illinois.edu/> 217-244-7389

Illinois New Teacher Collaborative

What research do we do?

Starting '08: CDEs

- Fall: demographics
- Spring: program operations & changes

Fall '10: noncontinuing programs survey

Winter '11: nonfunded districts survey

Spring '11: teacher/mentor surveys

intc@illinois.edu <http://intc.education.illinois.edu/> 217-244-7389

Illinois New Teacher Collaborative

How do we report the data?

Report type	LD Scale (1-3)
Data brief appendices	3
Data briefs	2
Final report	2
1-page research highlights	1

All reports are available on our website, intc.education.illinois.edu
Search for "FY10 final report" or "INTC data brief"

intc@illinois.edu <http://intc.education.illinois.edu/> 217-244-7389

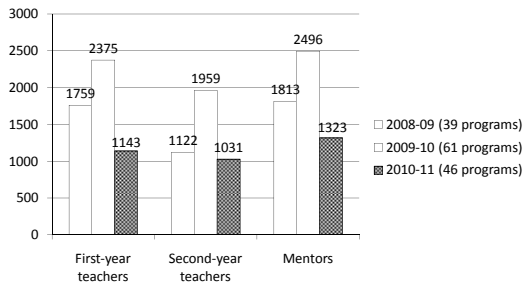
Illinois New Teacher Collaborative

What have we learned?



intc@illinois.edu <http://intc.education.illinois.edu/> 217-244-7389

Illinois New Teacher Collaborative Program growth: 2008-11



intc@illinois.edu <http://intc.education.illinois.edu/> 217-244-7389

Illinois New Teacher Collaborative

Individual program change: FY10-FY11

Average program

- 38% drop in # of new teachers

7 programs

- Had more new teachers (58% average increase)

36 programs

- Had fewer new teachers (39% average drop)

intc@illinois.edu <http://intc.education.illinois.edu/> 217-244-7389



Illinois New Teacher Collaborative Teacher content area: 2008-11

		Grade-level	SpEd	ESL	Math/ Science	English/ SS
2010-11	Y1 teachers	26	19	6	17	12
	Mentors	33	15	3	15	17
2009-10	Y1 teachers	30	17	4	32	
	Mentors	33	15	3	36	
2008-09	Y1 teachers	39	13	n/a	33	
	Mentors	38	11	n/a	34	

intc@illinois.edu <http://intc.education.illinois.edu/> 217-244-7389

Illinois New Teacher Collaborative Mentor types

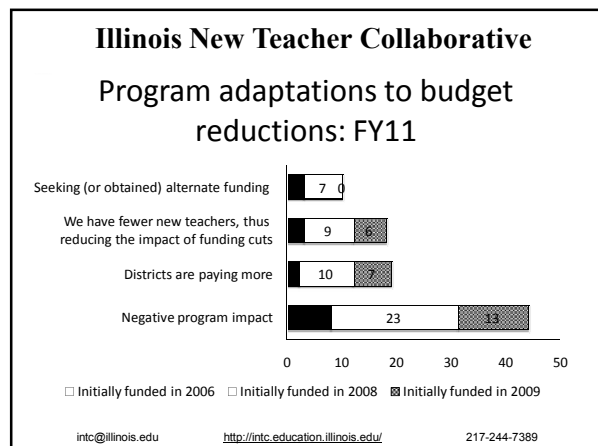
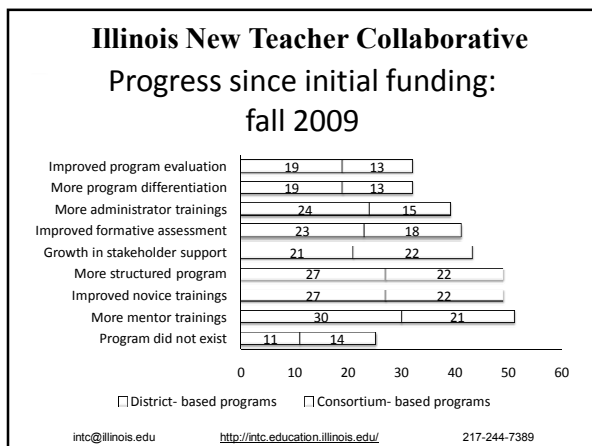
		Full-time or full-release	Full-time teachers or administrators	Retired personnel
2010-11	Total # of mentors	22 (2%)	1,193 (92%)	65 (5%)
	# of programs with this type of mentors	7 (18%)	36 (92%)	14 (36%)
2009-10	Total # of mentors	206 (8%)	1,994 (81%)	68 (3%)
	# of programs with this type of mentors	24 (38%)	45 (71%)	15 (24%)

intc@illinois.edu <http://intc.education.illinois.edu/> 217-244-7389

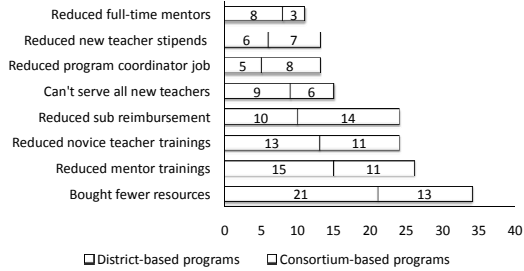
Illinois New Teacher Collaborative Funding levels FY10 Max: \$8,394 / BT Min: \$149 / BT

Program type	# of programs	Mean grant award per new teacher	Difference
<75 new teachers	39	\$2,639.65	\$1,197.25
>75 new teachers	21	\$1,442.40	
Initially funded 2006 or 2008	35	\$2,562.89	\$821.48
Initially funded 2009	25	\$1,741.41	
District-based	34	\$2,550.60	\$761.51
Consortium-based	26	\$1,789.09	
>50% low-income students	22	\$2,430.27	\$331.04
<50% low-income students	38	\$2,099.23	

intc@illinois.edu <http://intc.education.illinois.edu/> 217-244-7389



Illinois New Teacher Collaborative Impact of funding cuts: FY11



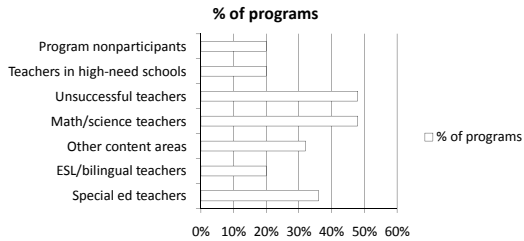
intc@illinois.edu <http://intc.education.illinois.edu/> 217-244-7389

Illinois New Teacher Collaborative New teacher retention: 2007-11

		% stayed in district	% voluntarily left	% RIFed, not rehired	% asked to leave
Hired in 09-10	Participated	79%	5%	15%	2%
	No program participation	65%	8%	14%	12%
Hired in 08-09	Participated	77%	10%	10%	3%
	No program participation	74%	14%	8%	5%
Hired in 07-08	Participated	74%	14%	6%	6%
	No program participation	73%	15%	7%	4%

intc@illinois.edu <http://intc.education.illinois.edu/> 217-244-7389

Illinois New Teacher Collaborative Attrition patterns: Fall 2010



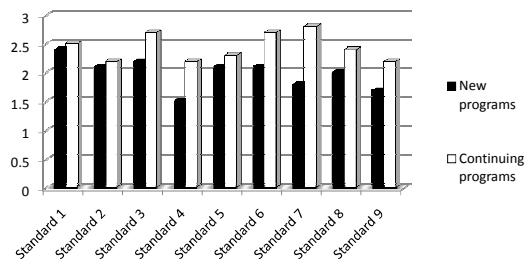
intc@illinois.edu <http://intc.education.illinois.edu/> 217-244-7389

Illinois New Teacher Collaborative Programs measuring impact spring 2010

- Teacher retention (20 programs)
 - Data: Retention data, surveys, interviews
 - Programs seem to have a positive impact
- Teacher quality (7 programs)
 - Data: Surveys, teacher ratings; no control group
 - Teachers improved over time
- Student achievement (3 programs)
 - Data: Surveys, student test scores, evaluations
 - No conclusions could be drawn thus far

intc@illinois.edu <http://intc.education.illinois.edu/> 217-244-7389

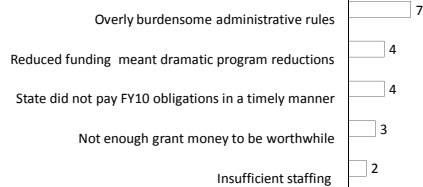
Illinois New Teacher Collaborative Self-rankings on the IIPC: spring 2010



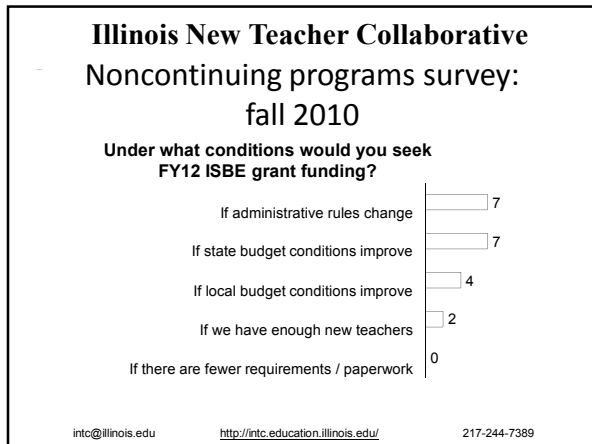
intc@illinois.edu <http://intc.education.illinois.edu/> 217-244-7389

Illinois New Teacher Collaborative Noncontinuing programs survey: fall 2010

Why did your program decide to not seek FY11 ISBE grant funding?
10 programs responded.



intc@illinois.edu <http://intc.education.illinois.edu/> 217-244-7389



Illinois New Teacher Collaborative

What can we conclude?

- Programs are diverse—but threats to diversity exist.
- Funding levels varied widely.
- Consortia-based programs have greater intrinsic challenges.
- Development takes time—and budget cuts may delay improvements

intc@illinois.edu <http://intc.education.illinois.edu/> 217-244-7389

Illinois New Teacher Collaborative

And...

- Participation increases retention.
- Examining impact on teaching is difficult.
- Improving school climate is as important as improving the induction program.

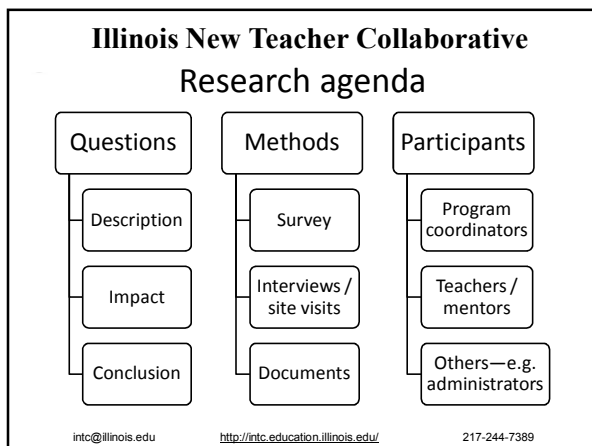
intc@illinois.edu <http://intc.education.illinois.edu/> 217-244-7389

Illinois New Teacher Collaborative

INTC's recommendations

- INTC**
 - Follow a new research agenda
 - Help programs collaborate
- ISBE**
 - Provide more communication
 - Provide steady and stable funding
- Funded programs**
 - Define roles and monitor follow-through
 - Plan collaboratively for sustaining /improving programs

intc@illinois.edu <http://intc.education.illinois.edu/> 217-244-7389



Illinois New Teacher Collaborative

Discussion

- What data are your program gathering already?
- What data would be helpful **to your program** for INTC to gather?
- What data should INTC gather to inform other constituencies: ISBE; state legislators; school boards; etc.?
- What data reports would be most helpful?

intc@illinois.edu <http://intc.education.illinois.edu/> 217-244-7389

Illinois New Teacher Collaborative

Contact:

Dr. Patricia Brady
Illinois New Teacher Collaborative
pbrady@illinois.edu
217-244-7376

intc@illinois.edu

<http://intc.education.illinois.edu/>

217-244-7389