

## Illinois New Teacher Collaborative

# 6<sup>th</sup> Annual INTC Induction and Mentoring Conference

Continuing the Continuum

March 1 and 2, 2011

[intc@illinois.edu](mailto:intc@illinois.edu)

<http://intc.education.illinois.edu/>

217-244-7389

## Illinois New Teacher Collaborative

Teams, please sit together.

[intc@illinois.edu](mailto:intc@illinois.edu)

<http://intc.education.illinois.edu/>

217-244-7389

## Illinois New Teacher Collaborative

**Dr. Chris Roegge**  
Director, INTC

[intc@illinois.edu](mailto:intc@illinois.edu)

<http://intc.education.illinois.edu/>

217-244-7389

## Illinois New Teacher Collaborative

**Dr. Christopher Koch**  
State Superintendent, ISBE

[intc@illinois.edu](mailto:intc@illinois.edu)

<http://intc.education.illinois.edu/>

217-244-7389

## Illinois New Teacher Collaborative

**Hilarie Welsh**  
Conference Presider, INTC

intc@illinois.edu

<http://intc.education.illinois.edu/>

217-244-7389

## Illinois New Teacher Collaborative

### Conference Overview

- This is a learning conference.
- During the conference you will learn from speakers, exhibitors, vendors and fellow participants.
- This is a working conference that will result in a program development plan “Design to Destiny.”

intc@illinois.edu

<http://intc.education.illinois.edu/>

217-244-7389

## Illinois New Teacher Collaborative

### Today's Schedule

9:30-11:00	Team Work Session #1
11:10-11:55	Critical Issues Sessions A
12:00-12:45	Lunch
12:45-1:45	Keynote #1 – Richard Ingersoll
1:45-2:05	Dessert Break
2:05-2:50	Critical Issues Sessions B
3:00-3:45	Critical Issues Sessions C
3:55-4:45	Team Work Session #2
5:00-6:00	Reception and Exhibits

[intc@illinois.edu](mailto:intc@illinois.edu)

<http://intc.education.illinois.edu/>

217-244-7389

## Illinois New Teacher Collaborative

### **Overview:**

### *The Illinois Induction Program Continuum*

intc@illinois.edu

<http://intc.education.illinois.edu/>

217-244-7389



## Illinois New Teacher Collaborative

**Mary Elin Barnish**  
INTC

**Mary Jane Morris**  
Consortium for Educational Change

intc@illinois.edu

<http://intc.education.illinois.edu/>

217-244-7389

## Illinois New Teacher Collaborative

### The Illinois Induction Program Continuum

Based on *Illinois Standards of Quality and Effectiveness for Beginning Teacher Induction Programs*

- Provides
  - Clear framework
  - Research-base for all programs
  - Common language
- Uses
  - Guide program development
  - Support self-assessment
  - Lead to goal writing and action planning

intc@illinois.edu

<http://intc.education.illinois.edu/>

217-244-7389

## Illinois New Teacher Collaborative

### The Illinois Induction Program Continuum

The *Continuum* format:

- Table of Contents
- Vision – page 1
- History of Development – page 2
- Introduction and Purpose – page 3
- Program Standards – page 4

[intc@illinois.edu](mailto:intc@illinois.edu)

<http://intc.education.illinois.edu/>

217-244-7389

## Illinois New Teacher Collaborative

### The Illinois Induction Program Continuum

“From the outset, our goal has been to craft a useful document that will prompt both thinking and action around the professional needs of new teachers in the state. Our aim is for this document to be used as a formative assessment tool as opposed to a summative assessment tool. In that regard, this document may be used effectively to promote program development through a cycle of continuous improvement.”

Illinois Induction Program Continuum Workgroup

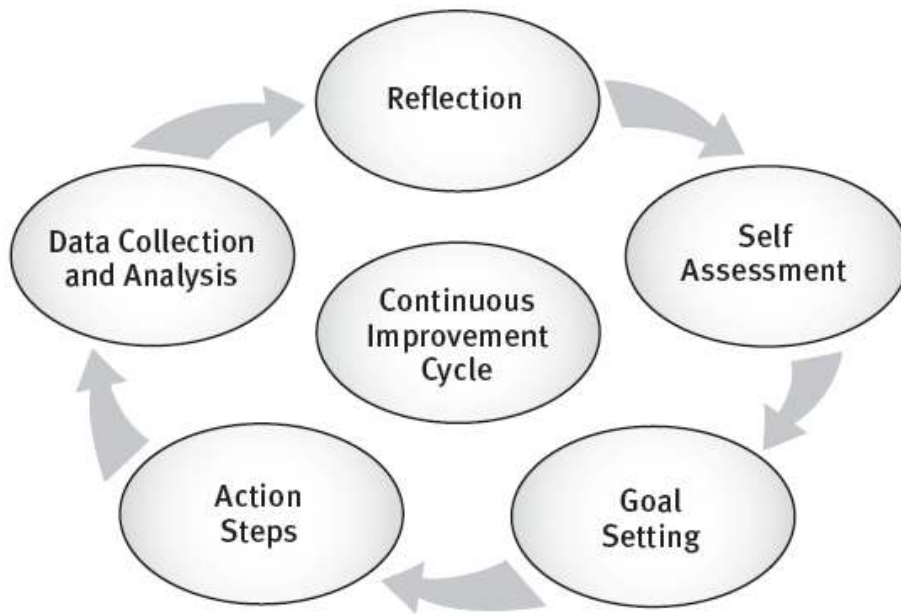
[intc@illinois.edu](mailto:intc@illinois.edu)

<http://intc.education.illinois.edu/>

217-244-7389

# Illinois New Teacher Collaborative

## Cycle of Continuous Improvement



intc@illinois.edu

<http://intc.education.illinois.edu/>

217-244-7389

## Illinois New Teacher Collaborative

### The Illinois Induction Program Continuum

The *Continuum* format (continued)

- *Continuum* Writing – page 5
- *Continuum* Organization – page 6
- Standards, Criteria, Levels of Implementation – pages 7-41
- Glossary of Terms – pages 42-43
- Acknowledgments – page 44

intc@illinois.edu

<http://intc.education.illinois.edu/>

217-244-7389

## Illinois New Teacher Collaborative

### Appreciative Inquiry

- DISCOVER the best
- DREAM of what might be
- DESIGN what can/should be
- DESTINY plan for what will be

intc@illinois.edu

<http://intc.education.illinois.edu/>

217-244-7389

## Illinois New Teacher Collaborative

### Team Work Sessions #1a & 1b 9:30-10:45

- DISCOVER
  - Answer questions individually.
  - Share with your team.
  - Reach consensus.
- Materials needed
  - Worksheets for Team Work Session #1a & #1b
  - *Illinois Induction Program Continuum*

intc@illinois.edu

<http://intc.education.illinois.edu/>

217-244-7389



## Illinois New Teacher Collaborative

### Team Work Sessions #1a & 1b 9:30-10:45

- DREAM
  - Determine Critical Issues Sessions Attendance.
  - Create your program vision.
  - Create a narrative, story, graphic, or picture.
  - Create a visual summary of your work to post.
- Materials needed
  - Worksheets for Team Work Session #1a & #1b
  - *Illinois Induction Program Continuum*
  - Large post-it paper, small post-it notes

## Illinois New Teacher Collaborative

# Begin Timer!



[intc@illinois.edu](mailto:intc@illinois.edu)

<http://intc.education.illinois.edu/>

217-244-7389

## Illinois New Teacher Collaborative

Time's up!



[intc@illinois.edu](mailto:intc@illinois.edu)

<http://intc.education.illinois.edu/>

217-244-7389

## Illinois New Teacher Collaborative

### Schedule

10:50-11:00	Gallery Walk
11:10-11:55	Critical Issues Sessions A
12:00-12:45	Lunch

[intc@illinois.edu](mailto:intc@illinois.edu)

<http://intc.education.illinois.edu/>

217-244-7389

## Illinois New Teacher Collaborative

Gallery Walk  
10:50 – 11:00

- Post your work on the wall.
- Walk around and view the work of other teams.
- Write comments/questions on small post-its.
- Note valuable information.

[intc@illinois.edu](mailto:intc@illinois.edu)

<http://intc.education.illinois.edu/>

217-244-7389

## Illinois New Teacher Collaborative

### Critical Issues Sessions

- Hotel map and room directions in booklet
- Session rooms locations
  - Vista Rooms (29th Floor)
  - Embassy, Ambassador (One level below lobby)
  - Plaza I-II, Plaza III (Across the mezzanine)
  - Conference Center 2 and 4 (Across the Mezzanine)

intc@illinois.edu

<http://intc.education.illinois.edu/>

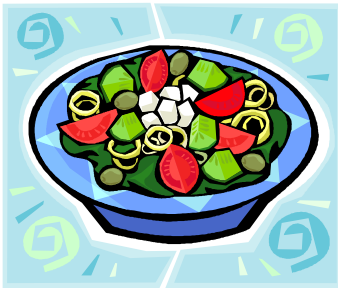
217-244-7389

# Illinois New Teacher Collaborative

## Lunch

12:00-12:45

Capitol/Illinois/Prairie



[intc@illinois.edu](mailto:intc@illinois.edu)

<http://intc.education.illinois.edu/>

217-244-7389

## Illinois New Teacher Collaborative

**Dr. Beth Wilkins**

INTC Executive Board Chair,  
Northern Illinois University

[intc@illinois.edu](mailto:intc@illinois.edu)

<http://intc.education.illinois.edu/>

217-244-7389



## Illinois New Teacher Collaborative

**Dr. Richard M. Ingersoll**

University of Pennsylvania

Graduate School of Education

Keynote underwritten by IPA

[intc@illinois.edu](mailto:intc@illinois.edu)

<http://intc.education.illinois.edu/>

217-244-7389

## Illinois New Teacher Collaborative

### Preview of Afternoon

- |                    |                            |
|--------------------|----------------------------|
| 1:45-2:05          | Dessert Break              |
| 2:05-2:50          | Critical Issues Sessions B |
| 3:00-3:45          | Critical Issues Sessions C |
| 3:55-4:45          | Team Work Session #2       |
| 5:00-6:00          | Reception and Exhibits     |
| Dinner on your own |                            |

[intc@illinois.edu](mailto:intc@illinois.edu)

<http://intc.education.illinois.edu/>

217-244-7389

## Illinois New Teacher Collaborative

Please be seated for Critical Issues  
Sessions B by 2:05.

We will return to this room at 3:55.

[intc@illinois.edu](mailto:intc@illinois.edu)

<http://intc.education.illinois.edu/>

217-244-7389

## Illinois New Teacher Collaborative

### Team Work Session #2

3:55 – 4:45

- DESIGN
  - Answer the worksheet questions as a team.
  - Use the continuum standards and criteria.
  - Create the basis for a practical plan.
- Materials needed
  - Worksheet for Team Work Session #2
  - *Illinois Induction Program Continuum*

## Illinois New Teacher Collaborative

# Begin Timer!



[intc@illinois.edu](mailto:intc@illinois.edu)

<http://intc.education.illinois.edu/>

217-244-7389

## Illinois New Teacher Collaborative

Time's up!



[intc@illinois.edu](mailto:intc@illinois.edu)

<http://intc.education.illinois.edu/>

217-244-7389

## Illinois New Teacher Collaborative

# Reception Tickets

Choose one question to answer

1. "What burning question would you like to ask other induction program leaders that would help inform your own induction-related practices?"

2. "Many people have noted that this conference conflicts with ISAT preparation and testing, do you have any suggestions on a better time to schedule this conference?"

Write your answer on a yellow card and give to conference staff. Submitting cards earns each person two drink tickets (soft drinks, wine, or beer). Reception includes complimentary hors d'oeuvres. Don't forget the drawing for a chance to win a gift card!

[intc@illinois.edu](mailto:intc@illinois.edu)

<http://intc.education.illinois.edu/>

217-244-7389

## Illinois New Teacher Collaborative

# Exhibits/Reception

5:00-6:00

Mezzanine and Rendezvous

[intc@illinois.edu](mailto:intc@illinois.edu)

<http://intc.education.illinois.edu/>

217-244-7389



## Illinois New Teacher Collaborative

### Wednesday Agenda

- |             |  |
|-------------|--|
| 7:00-8:00   | Conference Registration/<br>Breakfast (please sign in both days) |
| 8:00-9:00   | Keynote #2 – Karen Peterson                                      |
| 9:10-9:55   | Critical Issues Sessions D                                       |
| 10:05-11:15 | Progressive Chat   |
| 11:20-11:50 | Team Work Session #3   |
| 11:50-12:30 | Lunch/Evaluation/<br>Attendance Prizes                           |

[intc@illinois.edu](mailto:intc@illinois.edu)

<http://intc.education.illinois.edu/>

217-244-7389

## Illinois New Teacher Collaborative

**Dr. Chris Roegge**  
Director, INTC

[intc@illinois.edu](mailto:intc@illinois.edu)

<http://intc.education.illinois.edu/>

217-244-7389

## Illinois New Teacher Collaborative

**Stan Otto**

Education Leadership,  
State Farm

[intc@illinois.edu](mailto:intc@illinois.edu)

<http://intc.education.illinois.edu/>

217-244-7389

## Illinois New Teacher Collaborative

**Jason Leahy**

Executive Director, IPA

[intc@illinois.edu](mailto:intc@illinois.edu)

<http://intc.education.illinois.edu/>

217-244-7389

## Illinois New Teacher Collaborative

**Dr. Karen Peterson**

**Governors State University**

Keynote underwritten by IPA

[intc@illinois.edu](mailto:intc@illinois.edu)

<http://intc.education.illinois.edu/>

217-244-7389

## Illinois New Teacher Collaborative

**Tracy Kremer**  
New Teacher Center

intc@illinois.edu

<http://intc.education.illinois.edu/>

217-244-7389

## Illinois New Teacher Collaborative

### Wednesday Agenda

9:10-9:55	Critical Issues Sessions D
10:05-11:15	Progressive Chat
11:20-11:50	Team Work Session #3
11:50-12:30	Lunch/Evaluation/ Attendance Prizes

Please remember to sign in both days. This is important for CPDU credit.

[intc@illinois.edu](mailto:intc@illinois.edu)

<http://intc.education.illinois.edu/>

217-244-7389

## Illinois New Teacher Collaborative

### Progressive Chat

- Conversation clusters
- Three 20-minute sessions
- A new table/set of questions each session
- Circle color on the back of your name tag will determine which room you will visit.
  - Green: Ambassador (Concourse level)
  - Light Blue: Embassy (Concourse level)

intc@illinois.edu

<http://intc.education.illinois.edu/>

217-244-7389



## Illinois New Teacher Collaborative

Please be seated for  
Critical Issues Sessions D by 9:10.

Please be seated for  
Progressive Chat by 10:05.

We will return to this room at 11:20.

[intc@illinois.edu](mailto:intc@illinois.edu)

<http://intc.education.illinois.edu/>

217-244-7389

## Illinois New Teacher Collaborative

### Team Work Session #3

11:20 – 11:50

- DESIGN to DESTINY
  - Translate your dream and design into reality.
  - Create a practical action plan with your team.
  - Please provide completed plan to conference staff and receive team's raffle ticket for chance at door prizes.
  - Copy will be made for INTC.
  - Original will be available at center Mezzanine registration desk.
- Materials needed
  - Worksheet/handout for Team Work Session #3
  - *Illinois Induction Program Continuum*

intc@illinois.edu

<http://intc.education.illinois.edu/>

217-244-7389

## Illinois New Teacher Collaborative

# Begin Timer!



[intc@illinois.edu](mailto:intc@illinois.edu)

<http://intc.education.illinois.edu/>

217-244-7389

## Illinois New Teacher Collaborative

Time's up!



[intc@illinois.edu](mailto:intc@illinois.edu)

<http://intc.education.illinois.edu/>

217-244-7389

## Illinois New Teacher Collaborative

### Lunch

- Prairie Room
  - Evaluation
  - Drawings
  - CPDU's and Sub Reimbursement available at center Mezzanine registration desk.
- Thanks for attending the conference. See you again next year.
- Please drive safely.

[intc@illinois.edu](mailto:intc@illinois.edu)

<http://intc.education.illinois.edu/>

217-244-7389